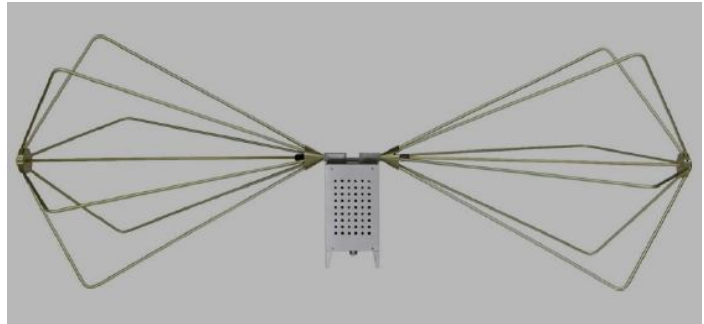


Bi conical Antenna 30-300MHz

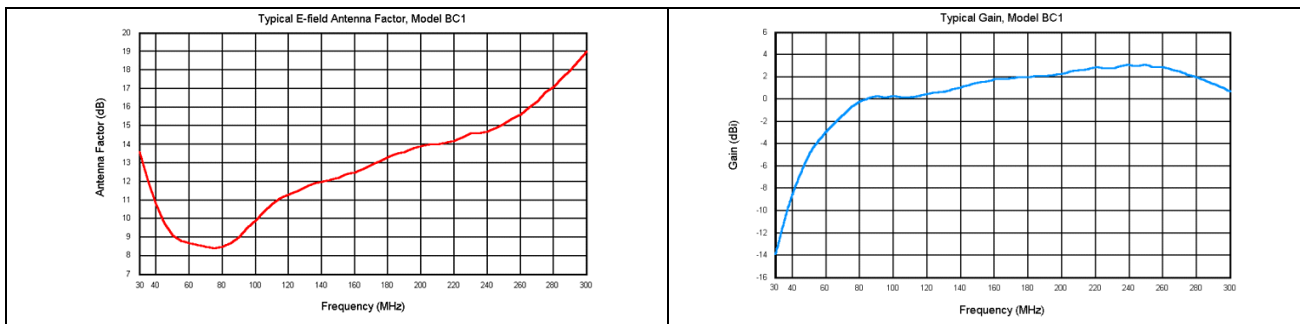
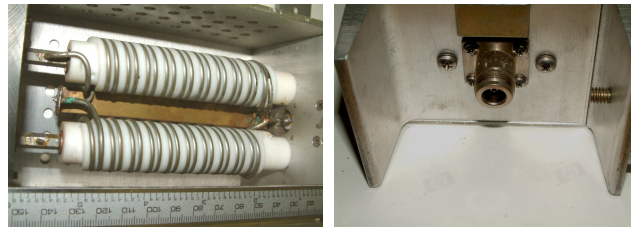
The Biconical antenna is particularly suitable for EMC and EMI test applications for Transmission and receiving measurements in the range: 20-300MHz.

Key Feature

Engineered and completely manufactured in Italy and Brazil. Ruggedized fully aluminium construction. Protective treatment with epoxy paint RAL white colour. High effective power handling capacity. Excellent quality at Low cost



Hi-Power Balun Details



Technical Specifications

- Frequency range: 30-300MHz
- 50 Ohm N connector type or 7/16 on demand.
- Suitable for test in according the standards: IEC 1000-4-3,FCC, MIL-STD, VDE and TEMPEST
- Up to 2" mounting clamp.
- Dimensions: 17 in. (43.2 cm) High, 52 in. (132.1 cm) Long
- Weight: 6.0 lb.'s (2.72 kg)

* Customized options available on demand.

Other products by Emctest:

GTEM cells, TEM and Stripline cells, Helmholtz coils, Hi power measurements antennas, Modular Shielded chambers, semi-anechoic chambers, reverberation chambers, Reverberation tents. Coaxial triaxial cells, Customized RF equipments for EMC and EMI tests.

Call or write for more info.