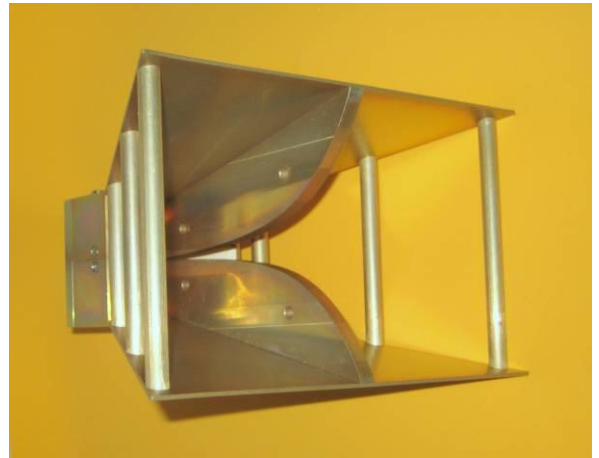
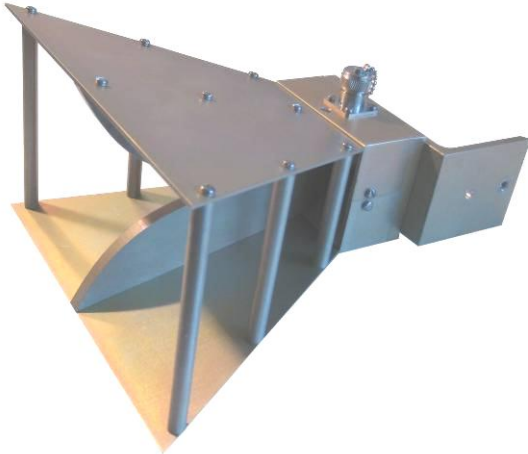


Double Ridge Horn Antenna EMC-RH118



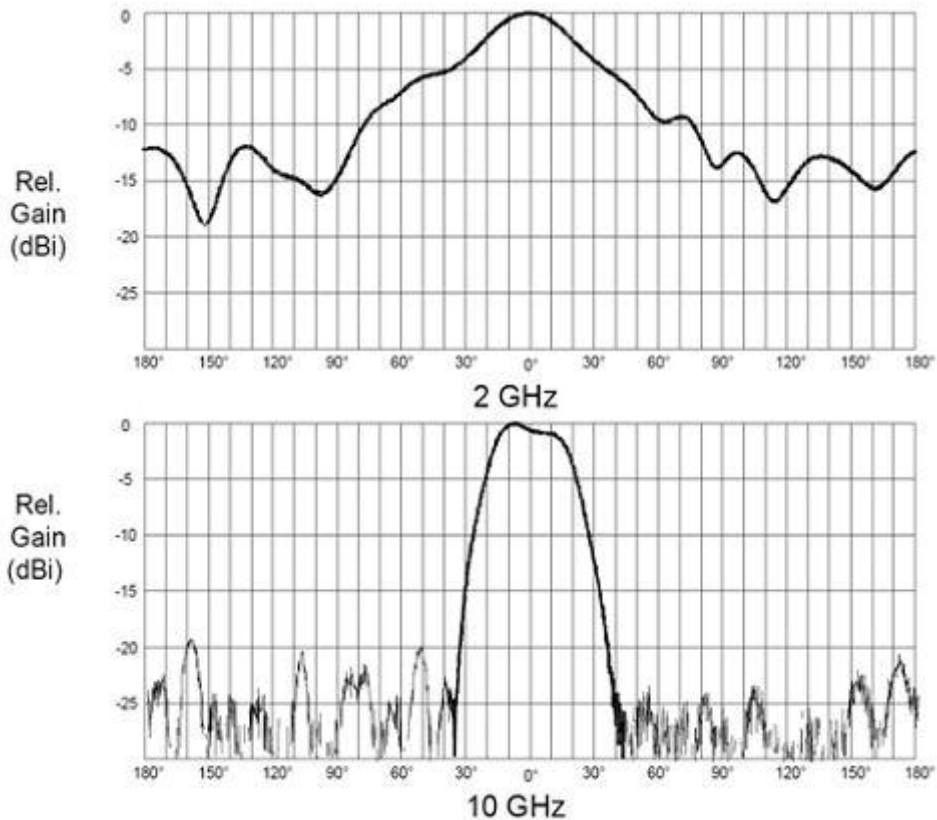
Technical Specifications

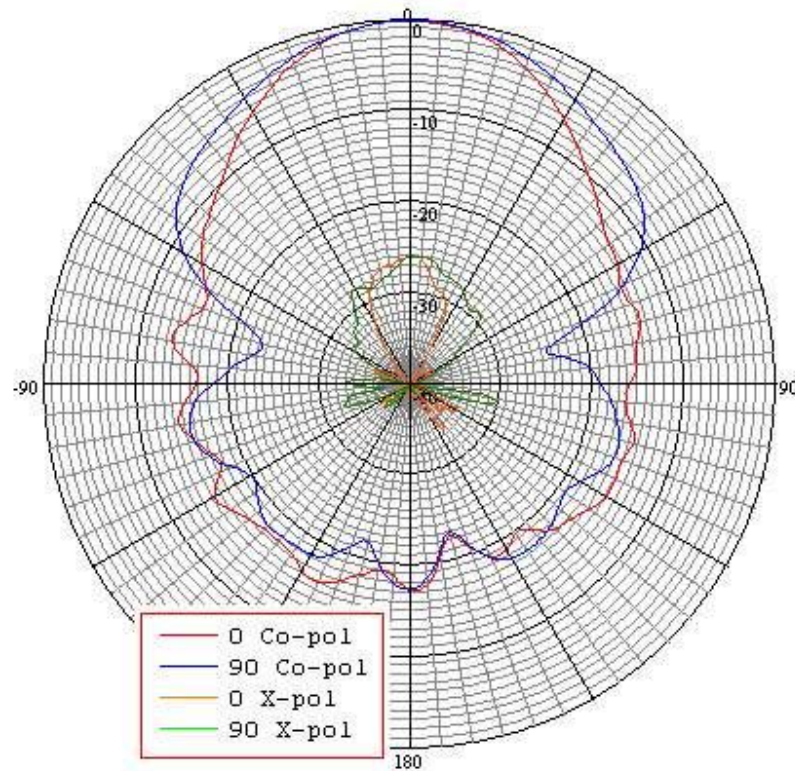
Frequency Range	1 - 18 GHz	Input Connector Type	Precision N - Female
Nominal Impedance	50 Ohms	Power CW	400 W
Typical VSWR	1,5:1 (AVG)	3dB Beam Width	35°-20°
Size (cm)	12,8 H 23 W 18 D		
Variable mounting bracket	45° step turnable		

- **Double-ridge waveguide horn**
- **Covers the entire test frequency range of 1 to 18 GHz**
- **Linearly polarized antenna ideally suited for broadband applications**
- **Immunity testing (MIL-STD 461/462 and IEC 1000-4-3)**
- **Emission testing (ANSIC63-4 and EN55022)**
- **Shielding effectiveness testing (MIL-STD 285 IEEE-299)**
- **Equipped with mounting bracket for vertical or horizontal polarization measurements**

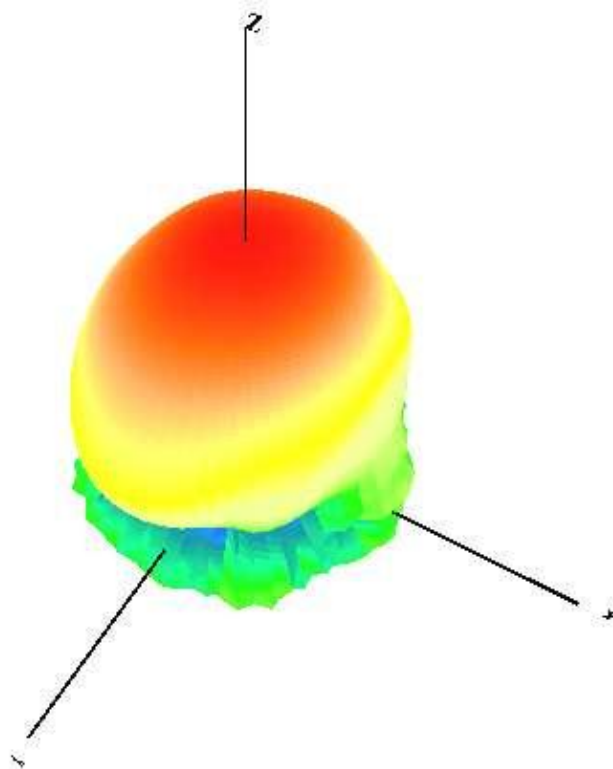
Frequency (GHz)	Typical Antenna Factor and Gain		Power Requirement (Watts) at 1 Meter Spacing to Obtain Field Strength		
	AFE (dB m-1)	Gain (dBi)	E 10 V/m	E 20 V/m	E 100 V/m
1,00	22,93	7,30	0,62	2,48	62,00
2,00	30,15	6,10	0,82	3,27	81,80
3,00	30,67	9,10	0,41	1,64	40,90
4,00	29,97	12,30	0,20	0,78	19,60
5,00	32,81	11,40	0,24	0,97	24,10
6,00	32,99	12,80	0,17	0,70	17,40
7,00	35,33	11,80	0,22	0,88	22,00
8,00	36,79	11,50	0,24	0,94	23,50
9,00	36,21	13,10	0,16	0,65	16,30
10,00	38,03	12,20	0,20	0,80	20,00
12,00	37,81	14,00	0,13	0,53	13,20
14,00	42,35	10,80	0,28	1,11	27,70
16,00	38,51	15,80	0,09	0,35	8,70
18,00	42,54	12,80	0,18	0,70	17,50

Radiation Patterns

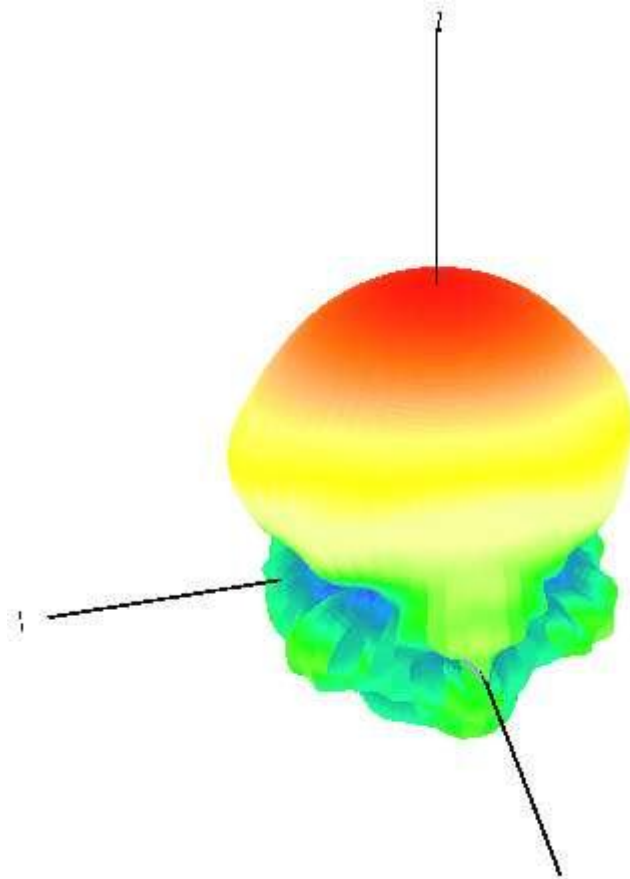




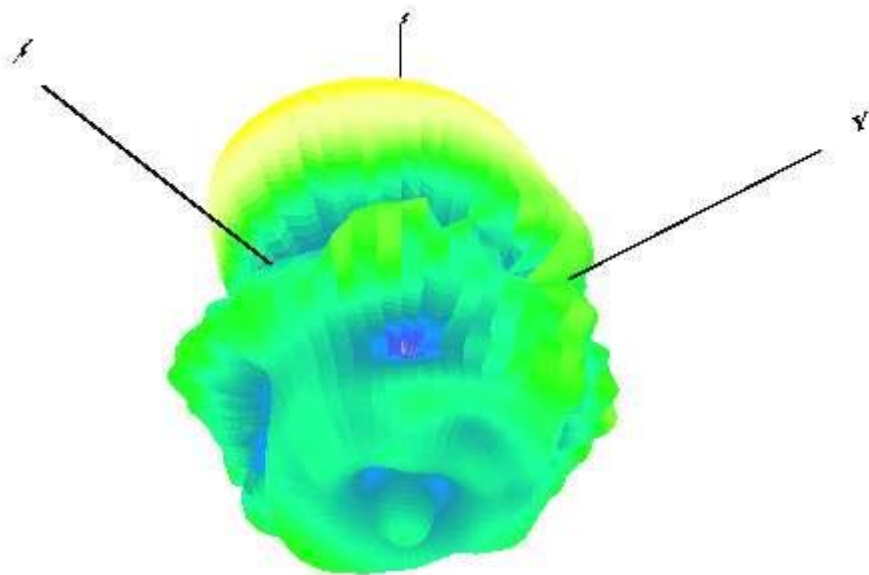
Co-Polarization (Co-Pol) and Cross-Polarization (X-Pol) Patterns



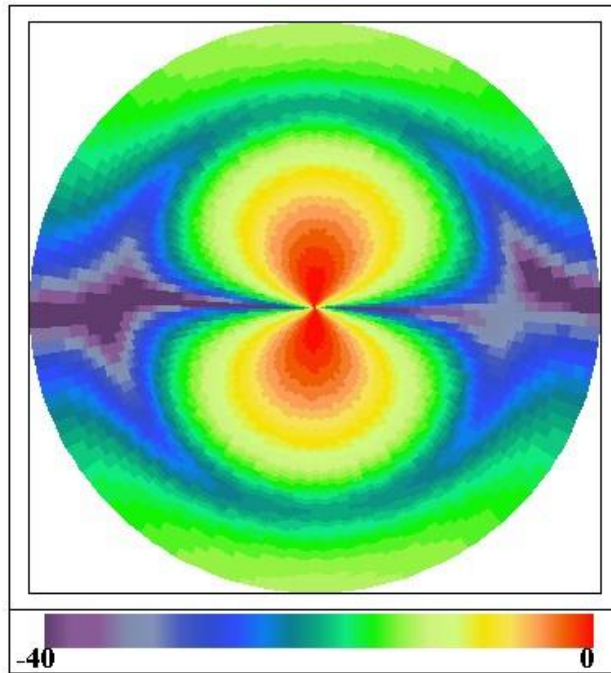
3-D Amplitude (at 45°)



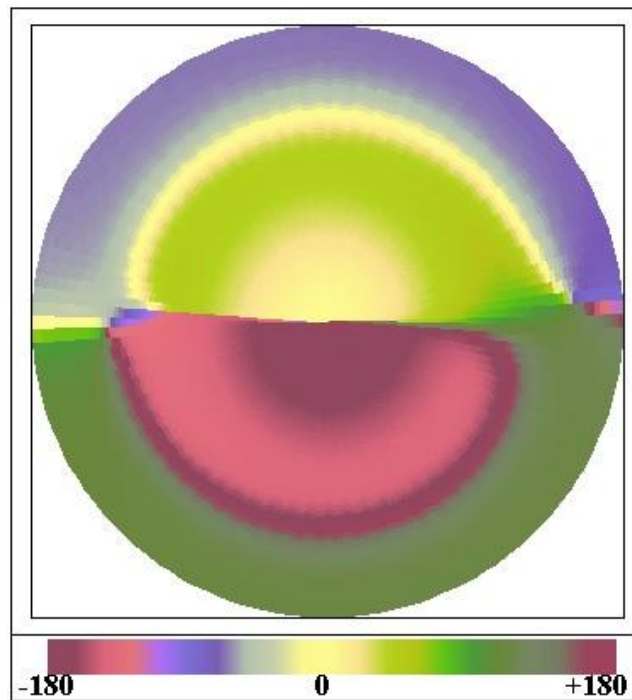
3-D Amplitude (at 90°)



3-D Amplitude (Back Side)



**2-D Contour Holography, Amplitude
1" from aperture**



**2-D Contour Holography, Phase
1" from aperture**