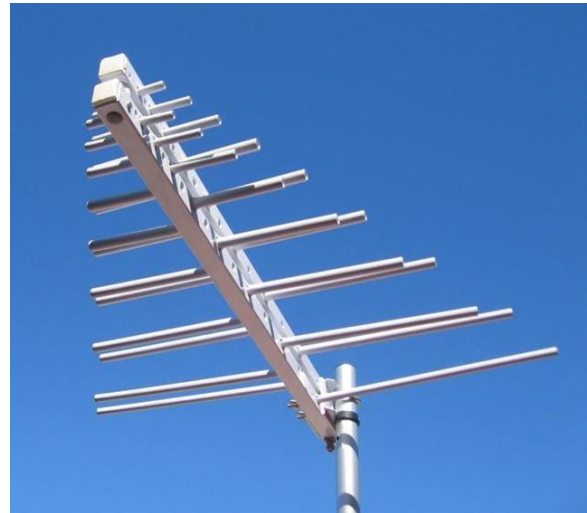


## Logarithmic antenna: 200-1000 MHz

The Logarithmic antenna is particularly suitable for EMC and EMI test applications for Transmission and receiving measurements. It is designed to suppress unwanted side lobes signals. The Logarithmic antenna is particularly suitable for EMC and EMI test applications for Transmission and receiving measurements. It is designed to suppress unwanted side lobes signals. Engineered and completely manufactured in Europe and Brazil. Ruggedized fully aluminum construction. Protective treatment with epoxy paint RAL white color. High effective power handling capacity. Excellent quality at Low cost.



### Technical Specifications

**Frequency range:** 200-1000 MHz.

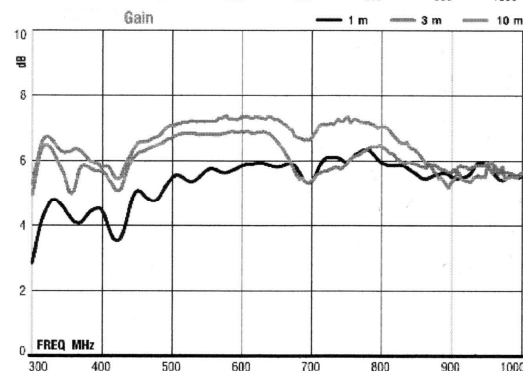
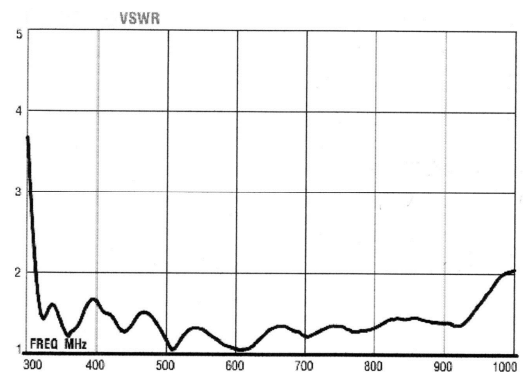
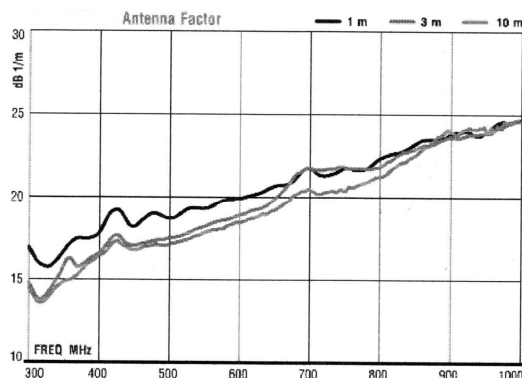
**Nominal Impedance:** 50 Ohm.

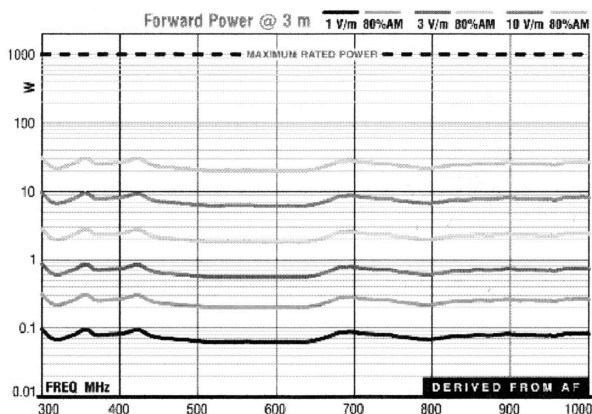
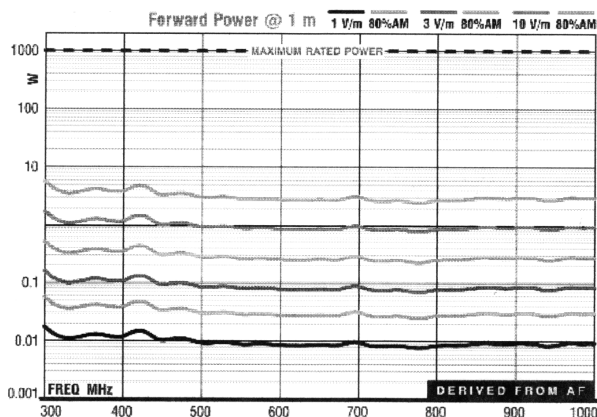
**Input:** N-female connector type  
or 7/16 on demand

**SWR (medium):** 1.2:1

**Power handling:** 1Kw Max.

Customized options available on demand.





Frequenza (MHz)	Fattore d' Antenna a 3 m (dB)
200	12.3
225	11.9
250	12.9
275	13.8
300	14.9
325	14.3
350	14.7
375	15.5
400	16.6
425	16.9
450	17.5
475	18.1
500	18.9
525	18.9
550	19.1
575	19.4
600	19.6
625	19.9
650	20.4
675	21.5
700	21.7
725	21.7
750	21.6
775	21.6
800	21.8
825	22.8
850	23.2
875	23.7
900	23.5
925	23.7
950	24.1
975	24.6
1000	25.1

Fattori di correzione antenna log-periodica

### Other products by GTEM:

GTEM cells, Stripline, Helmholtz coils, Hi power measurements antennas, Modular Shielded and semianechoic chambers, reverberation chambers and tents. Coaxial- triaxial cells, Customized RF equipments for EMC and EMI tests.

**Call or write for more info.**